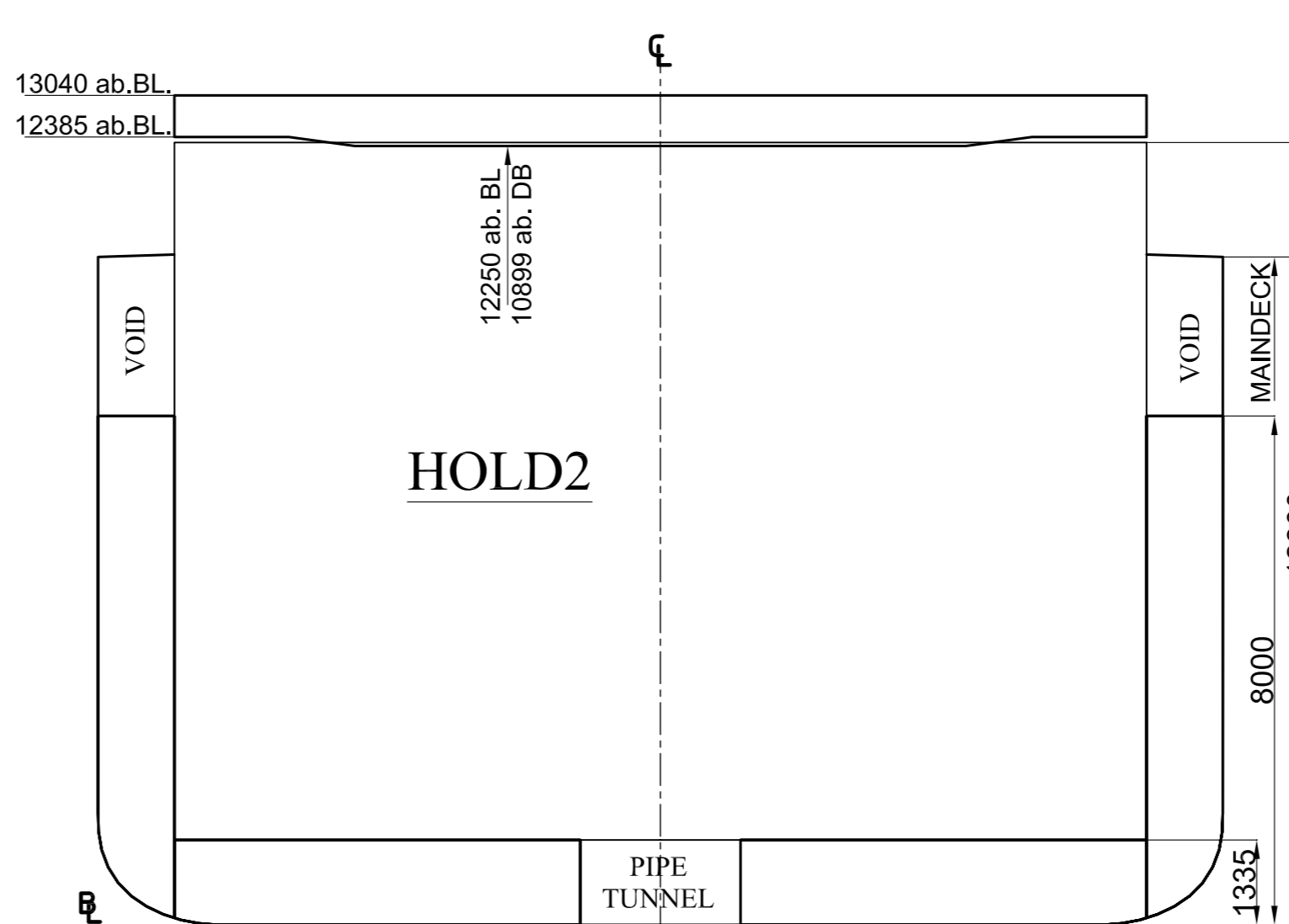
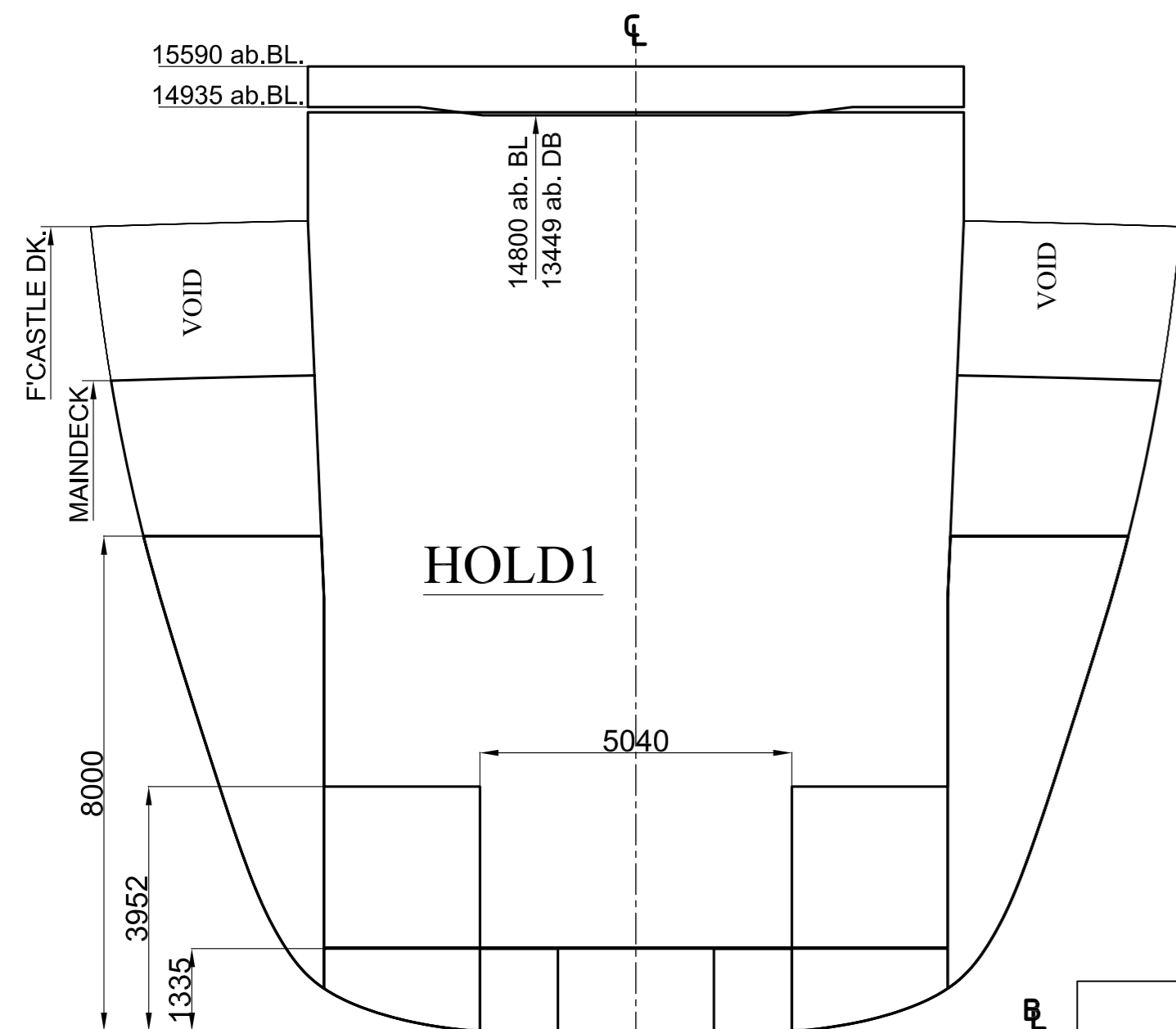


FR39



FR110

| | |
|-------------------------------|-------------------------|
| CAPACITY OF BALLAST TANK | 4064.610 m ³ |
| CAPACITY OF HFO TANKS | 731.750 m ³ |
| CAPACITY OF MDO TANKS | 92.89 m ³ |
| CAPACITY OF LUB OIL TANKS | 32.050 m ³ |
| CAPACITY OF FRESH WATER TANKS | 101.260 m ³ |
| CAPACITY OF OTHER TANKS | 211.290 m ³ |



FR174

MAIN PARTICULARS

| | |
|---------------------|-----------------------|
| LENGTH OVERALL | =148.64 m. |
| LENGTH BETW. P.P. | =138.944 m. |
| SCANTLING LENGHT | =139.00 m. |
| BREADTH MOULDED | =17.68 m. |
| DEPTH TO MAIN DECK | =10.50 m. |
| MAIN DECK CHAMBER | =150 mm. |
| DRAUGHT (SCANTLING) | =7.89 m. |
| DRAUGHT (DESIGN) | =7.818 m. |
| DEADWEIGHT | =11719 TONES |
| GRAIN CAPACITY | =16012 m ³ |

| | | |
|----------|----------------------------|----------------------------------|
| HOLD 1 : | 26.99 x 10.166 x 13.454 m. | BOOTOM AREA : 211 m ² |
| HOLD 2 : | 37.87 x 15.280 x 10.904 m. | BOOTOM AREA : 573 m ² |
| HOLD 3 : | 38.59 x 15.280 x 10.904 m. | BOOTOM AREA : 548 m ² |

HATCH COAMING OPENING

| | |
|----------|----------------|
| HOLD 1 : | 25.271 x 10.60 |
| HOLD 2 : | 37.30 x 15.28 |
| HOLD 3 : | 37.30 x 15.28 |

CLASS : BUREAU VARITAS : I + HULL + MACH UNRESTRICTED NAVIGATION
 GENERAL CARGO SHIP, HEAVY CARGO, DANGEROUS CARGO
 AUT-UMS, CLEAN SHIP, INWATER SURVEY, MON-SHAFT

ENGINE PARTICULARS

| | |
|---------------|------------------------|
| MAIN ENGINE | MAK- 8M 32 C - 600 rpm |
| SERVICE SPEED | 14.1 Knots |

UPPERDECK HATCH COVERS TO HAVE STRENGTH FOR
 -HATCH COVERS STRENGTH FOR UNIFORM LOADS ACCORDING LOADLINE

- FOR HATCH COVER 1:
2 TIERS OF ISO 20/40 FT CONTAINERS AT TOTAL STACK WEIGHT OF 28/40 TONS.
- FOR HATCH COVER 2 & 3:
4 TIERS OF ISO 20/40 FT CONTAINERS AT TOTAL STACK WEIGHT OF 42/60 TONS.

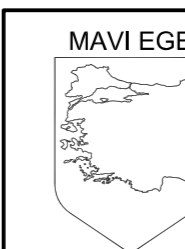
INNER BOTTOM PLATING AND STIFFENERS TO HAVE STENGTH FOR
 - INNER BOTTOM IS STRENGTHENED FOR MAXIMUM UNIFORM DISTRIBUTED LOAD OF 14 t/m²

- 4 TIERS OF ISO 20/40 FT CONTAINERS AT TOTAL STACK WEIGHT OF 100/120 TONS.
- 5 TIERS OF ISO 20/40 FT CONTAINERS AT TOTAL STACK WEIGHT OF 100/120 TONS.

BULK LOADING
 - 1.00 TON/M3 DISTRIBUTED CARGO LOAD

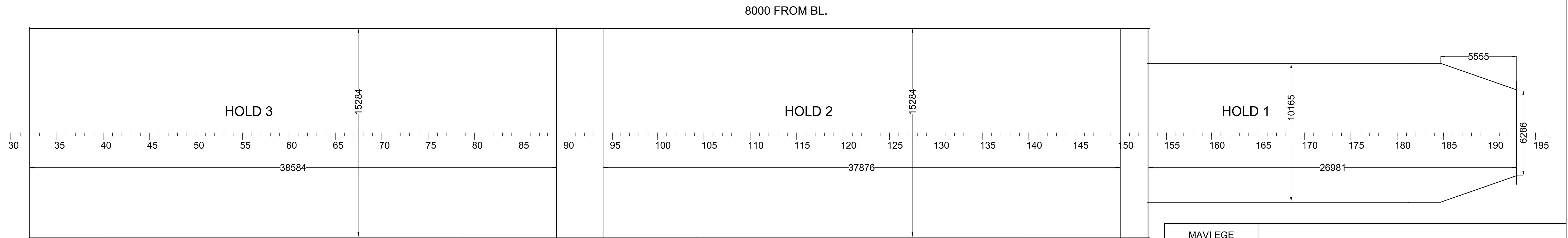
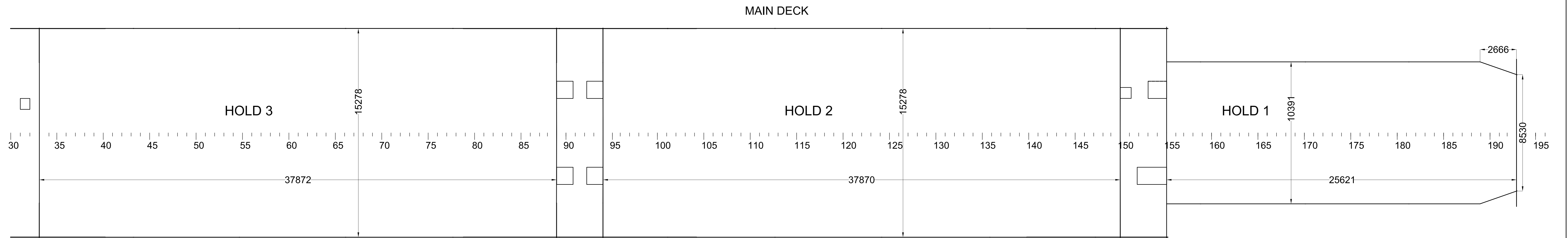
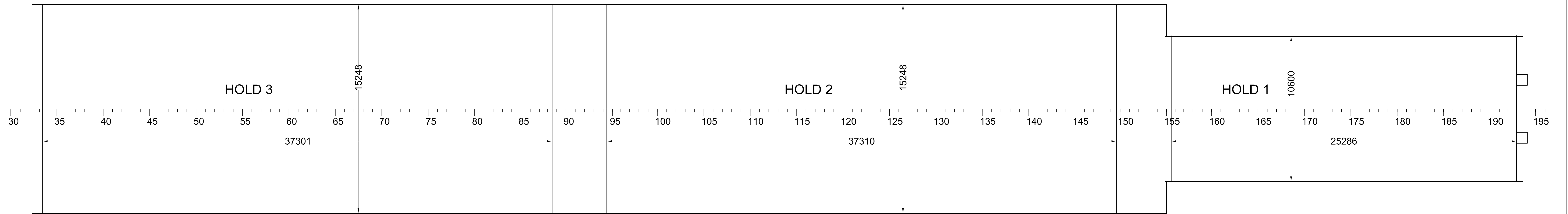
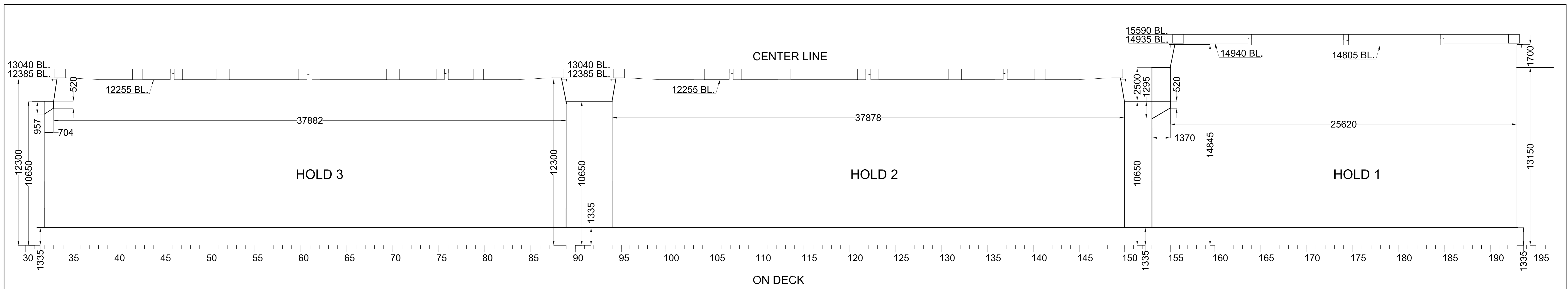
FULL LOADED HOLDS PREPERTIES


| HOLDS | FRAME | L.C.G. (m.) | V.C.G. (m.) | T.C.G. (m.) | BULK | BALE | UP TO COAMING 12300 FR BL |
|--------|---------|----------------|----------------|----------------|--------------------------|--------------------------|------------------------------|
| | | | | | Volume (m ³) | Volume (m ³) | Volume (m ³) |
| HOLD 1 | 153-193 | 118.175 | 8.352 | 0.000 | 3419.050 | 3419.050 | 3419.050 |
| HOLD 2 | 94-150 | 84.028 | 6.784 | 0.000 | 6300.000 | 6300.000 | 6339.500 |
| HOLD 3 | 32-89 | 47.714 | 6.833 | 0.000 | 6293.320 | 6293.320 | 6332.900 |
| TOTALS | | | | | 16012.370 | 16012.370 | 16091.450 |



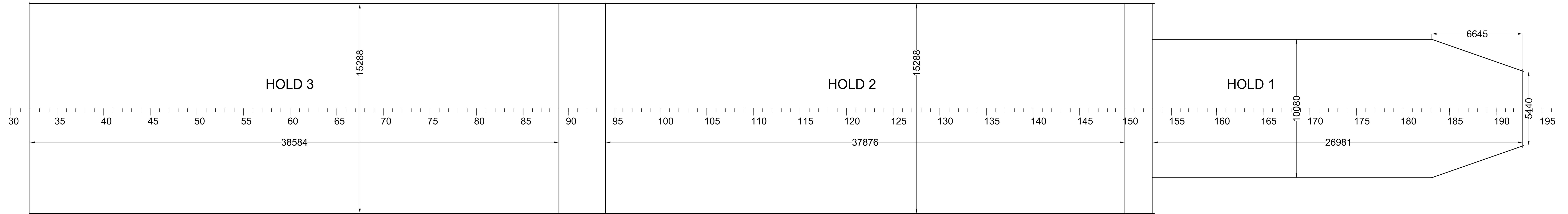
POCKET PLAN

| | |
|------------------|-------------|
| REV | SCALE |
| DRW'N GCS10-W-10 | SHEET:01/03 |

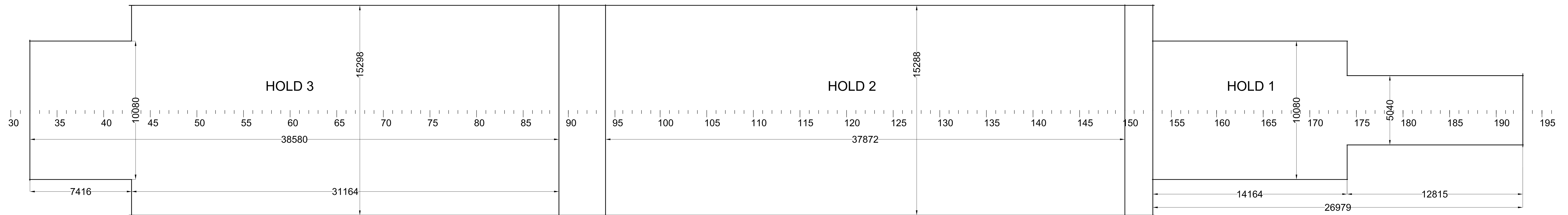


| | | |
|---|--------------------|-------------|
|  | POCKET PLAN | |
| | REV | SCALE |
| | DRW'N GCS10-W-10 | SHEET:02/03 |

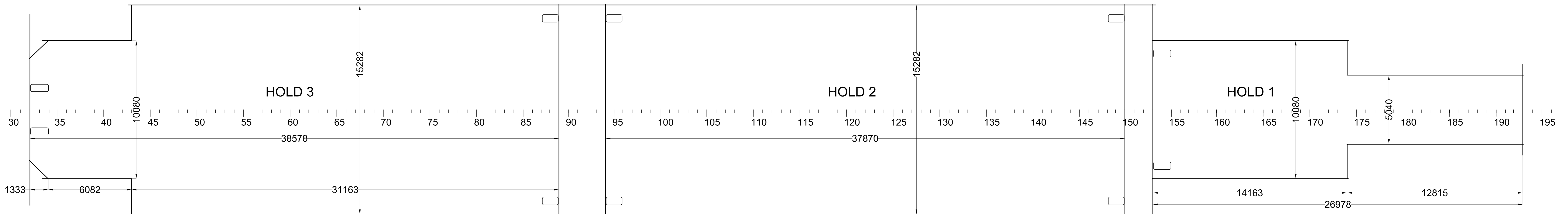
6135 FROM BL.




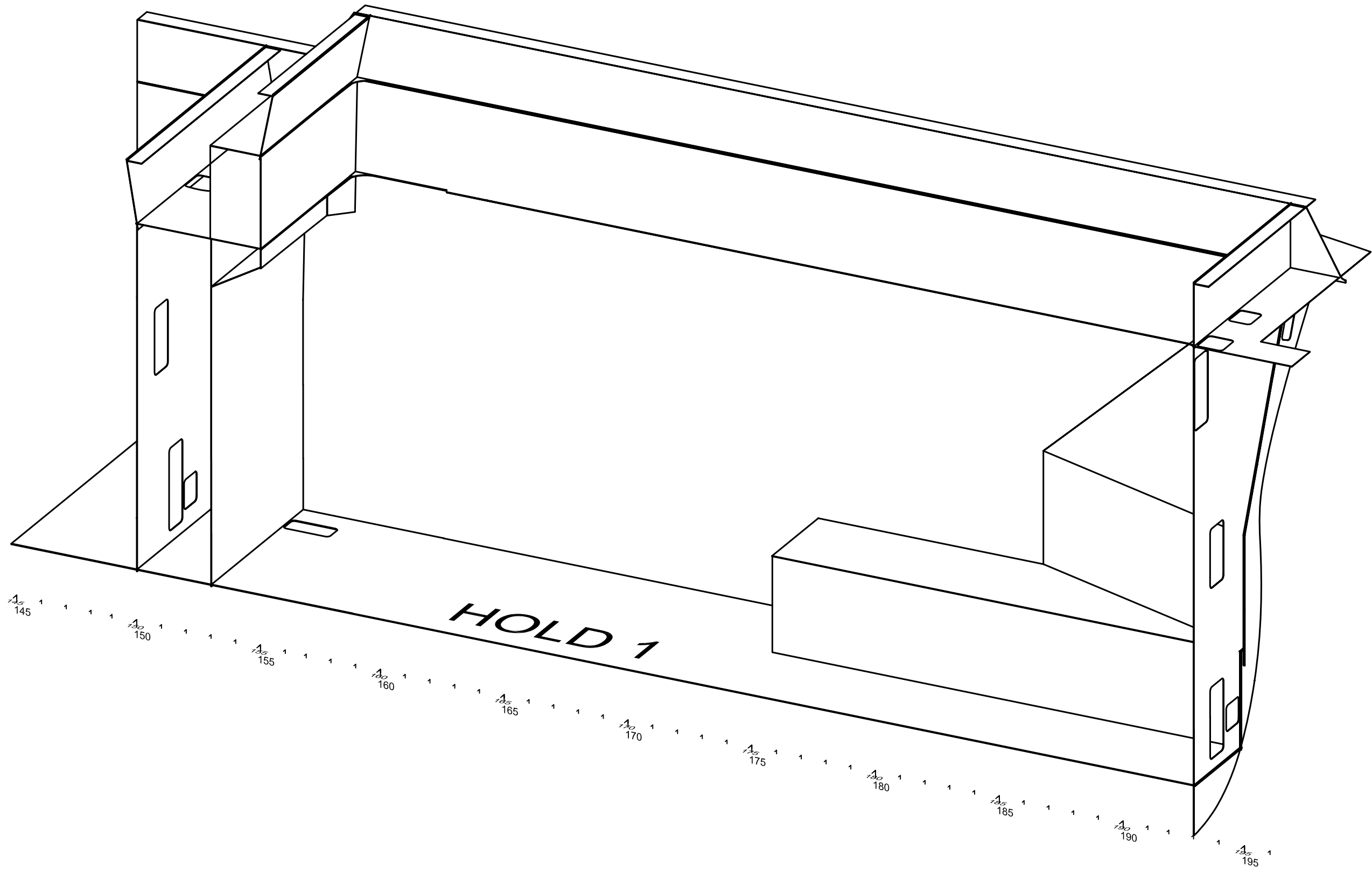
3940 FROM BL.



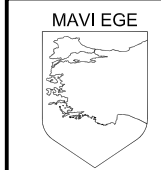
DOUBLE BOTTOM



| | | |
|---|--------------------|-------------|
|  | POCKET PLAN | |
| | REV | SCALE |
| | DRW'N GCS10-W-10 | SHEET:03/03 |



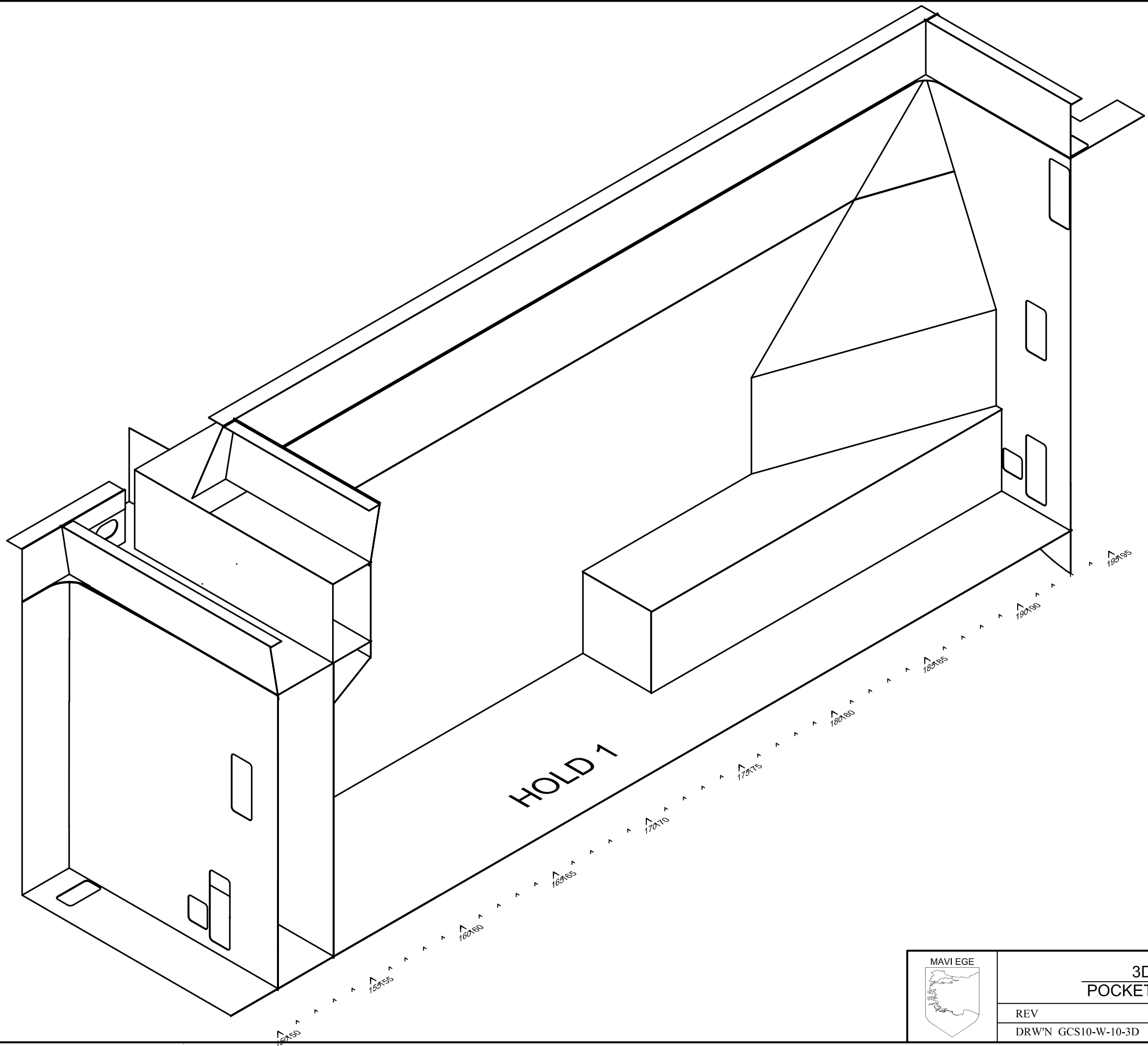
HOLD 1



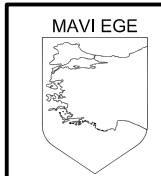
**3D
POCKET PLAN**

REV
DRW'N GCS10-W-10-3D

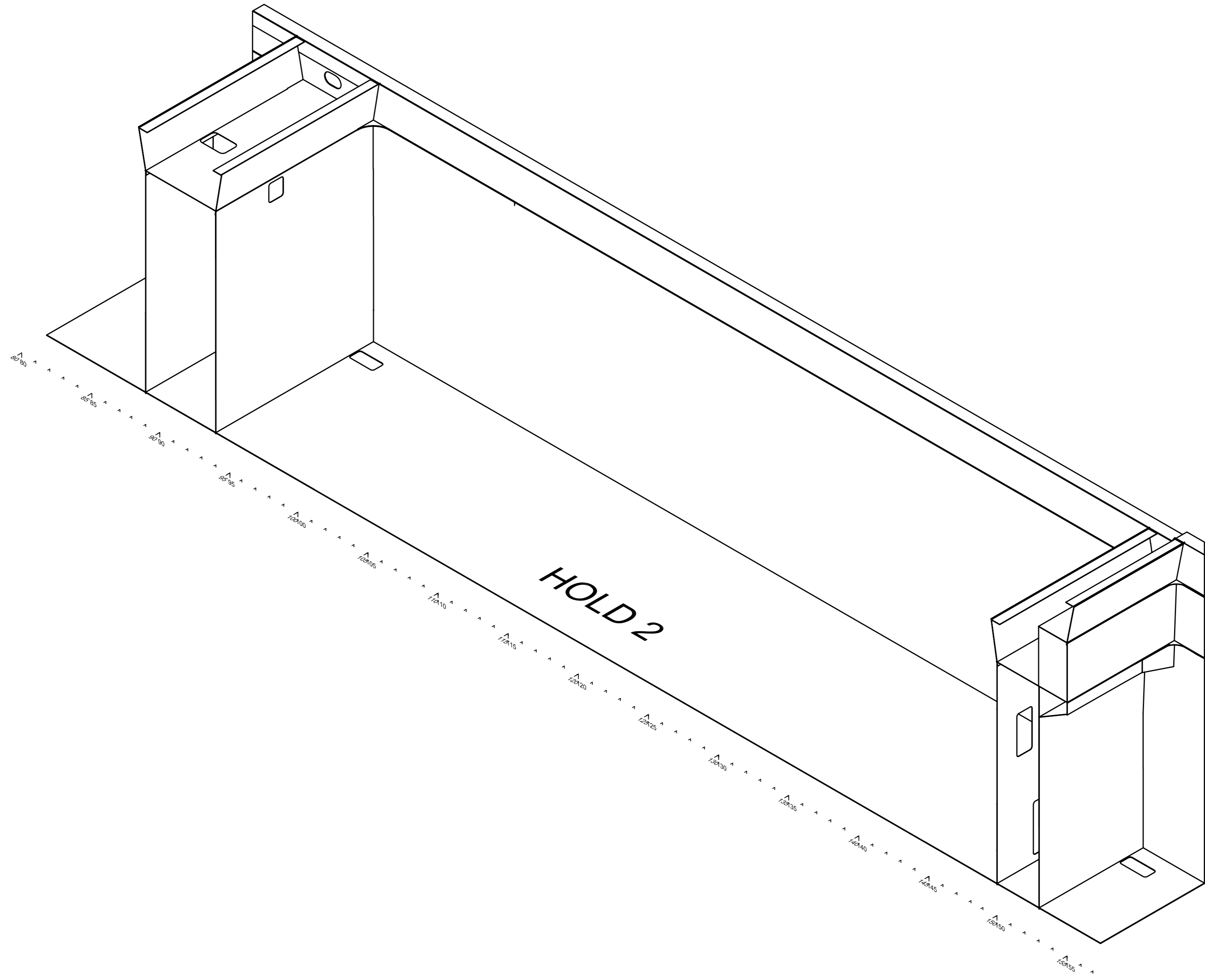
SCALE
SHEET:01/08




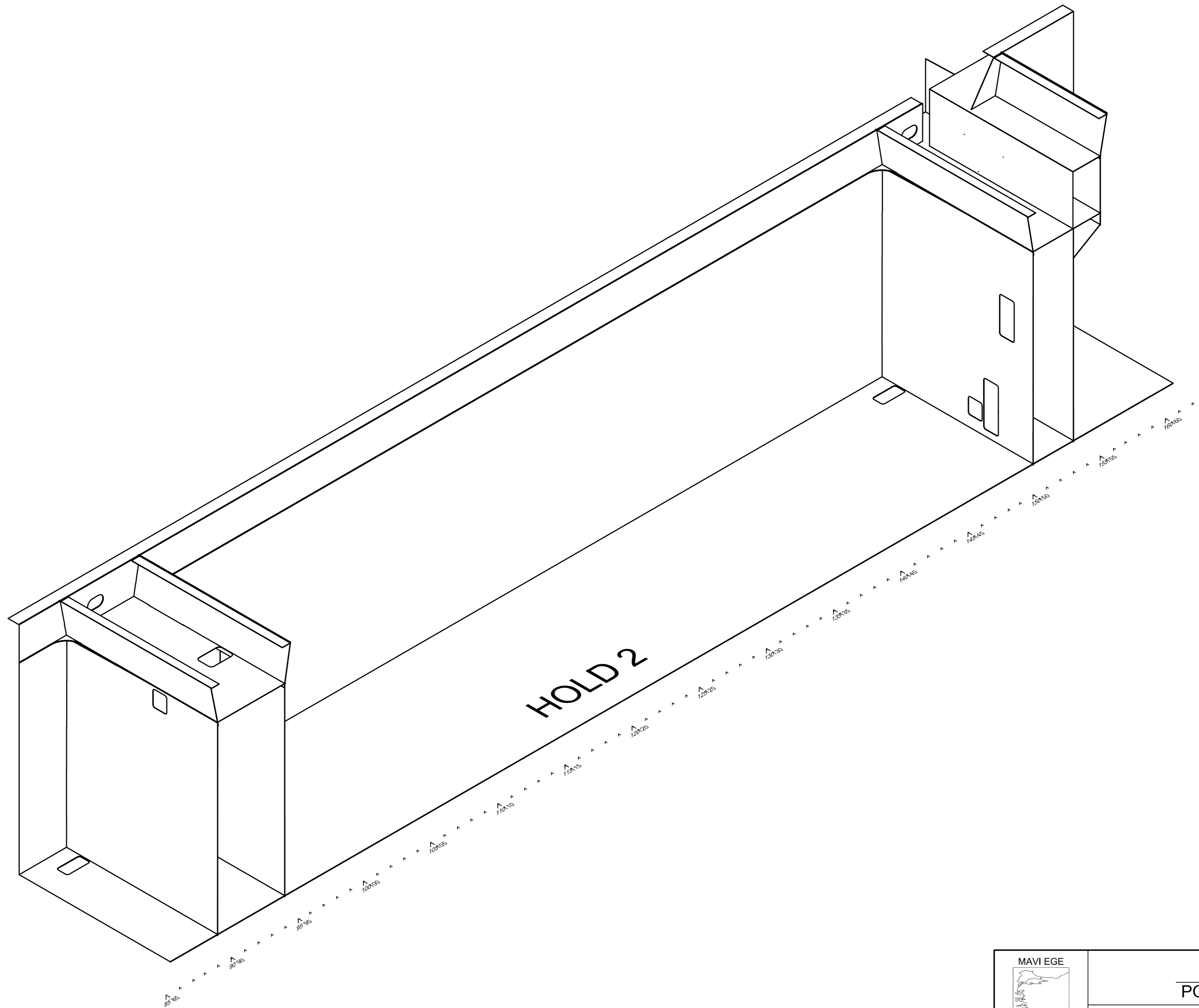
HOLD 1




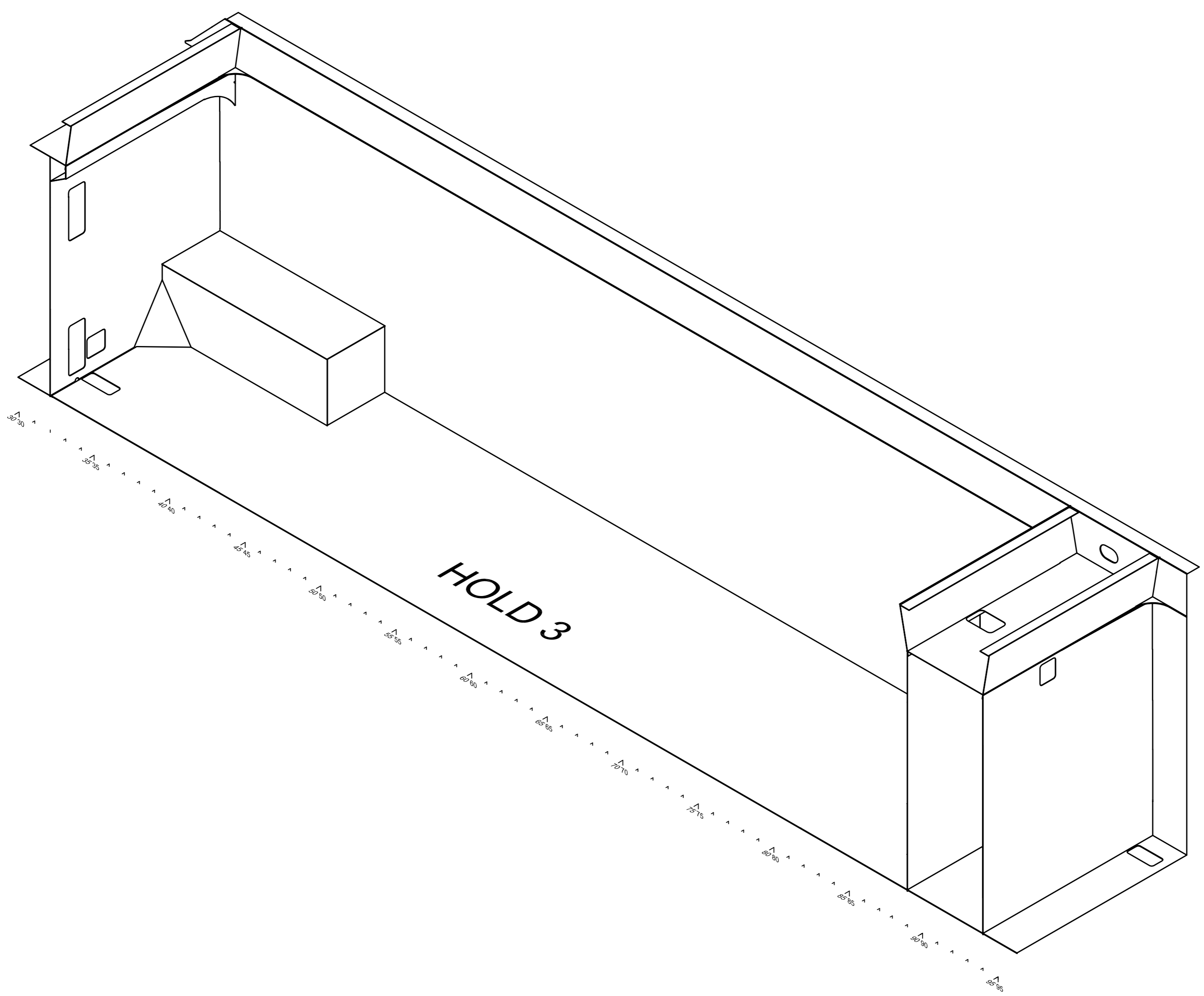
| | |
|---------------------------|-------------|
| 3D POCKET PLAN | |
| REV | SCALE |
| DRW'N GCS10-W-10-3D | SHEET:02/08 |

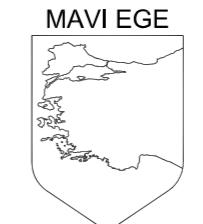


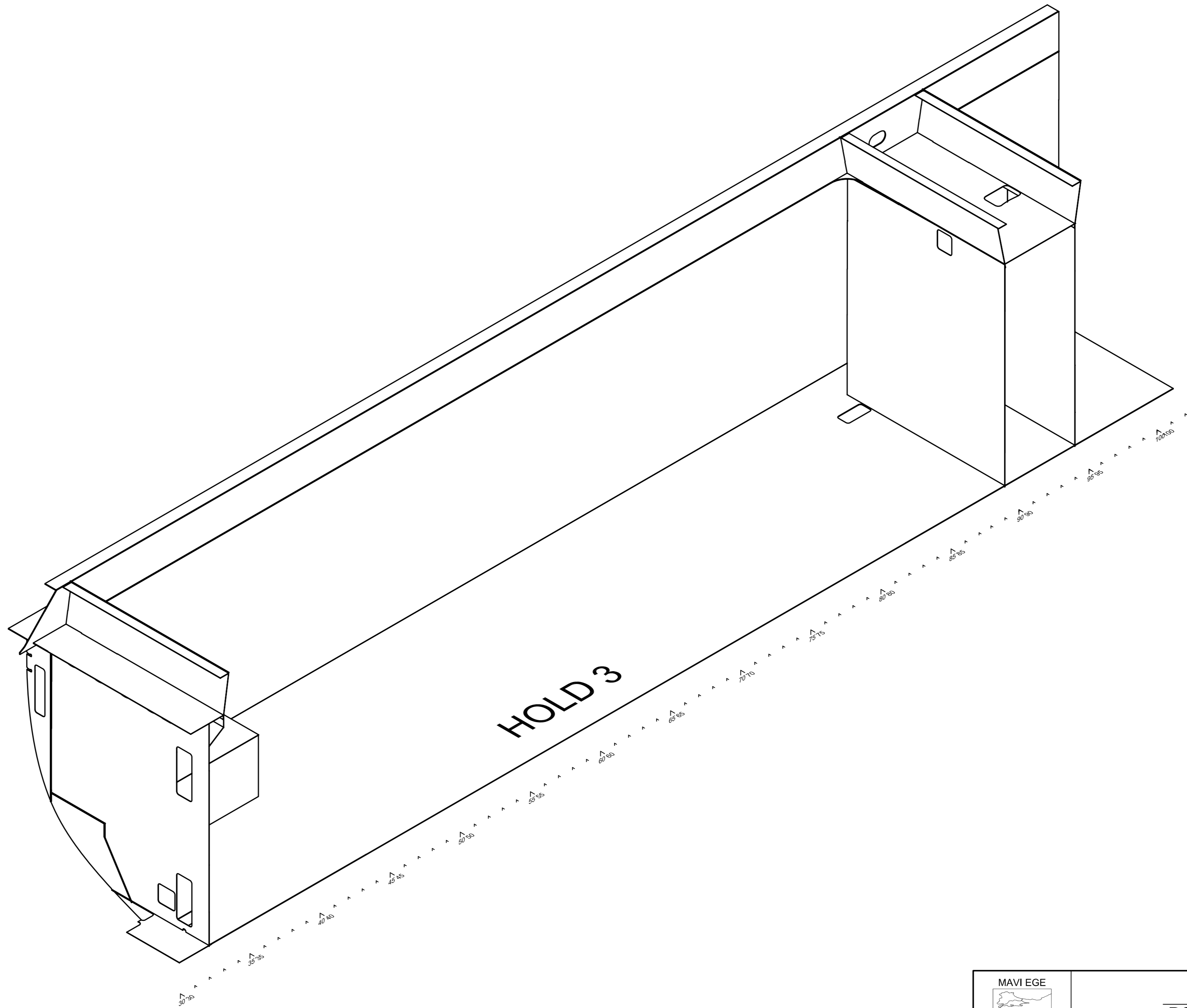
| | | |
|---|---------------------------------|----------------------|
|  | 3D POCKET PLAN | |
| | REV DRW'N GCS10-W-10-3D | SCALE SHEET:03/08 |




| | | |
|---|---------------------------------|-------------|
|  | 3D POCKET PLAN | |
| | REV | SCALE |
| | DRW'N GCS10-W-10-3D | SHEET:04/08 |

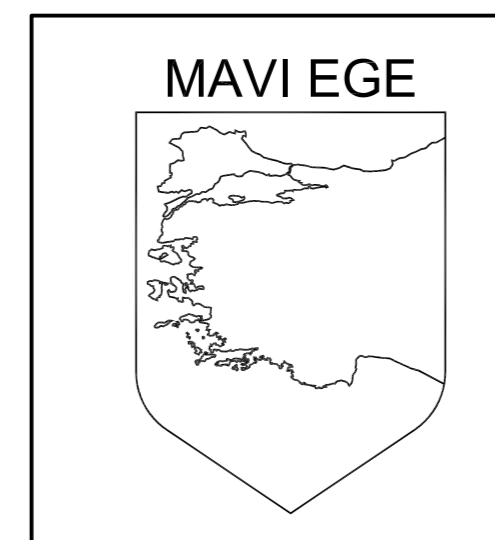
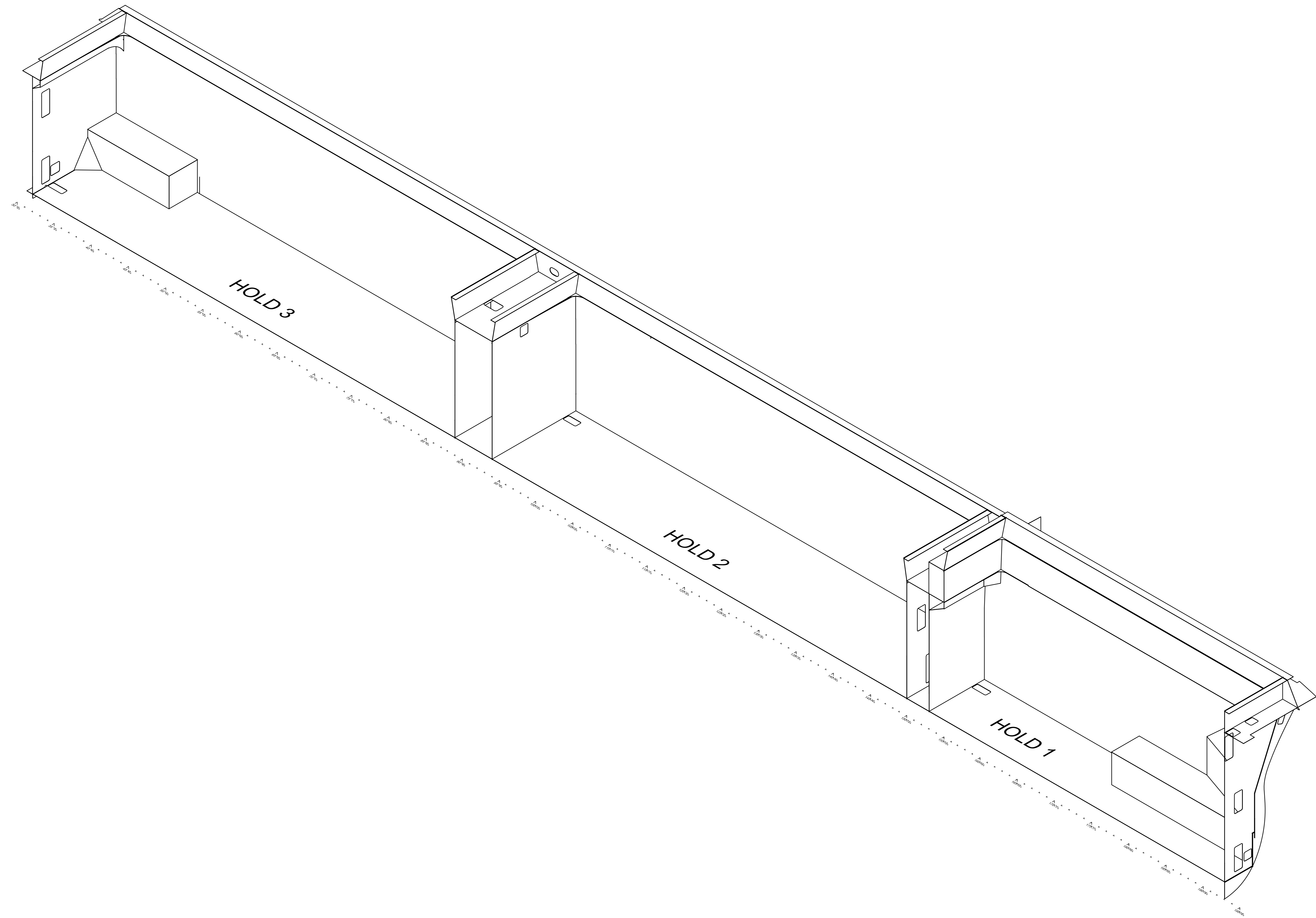


| | | |
|---|---------------------|-------------|
|  | 3D POCKET PLAN | |
| | REV | SCALE |
| | DRW'N GCS10-W-10-3D | SHEET:05/08 |



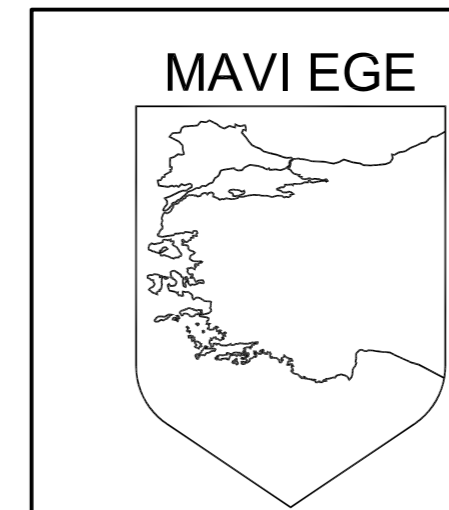
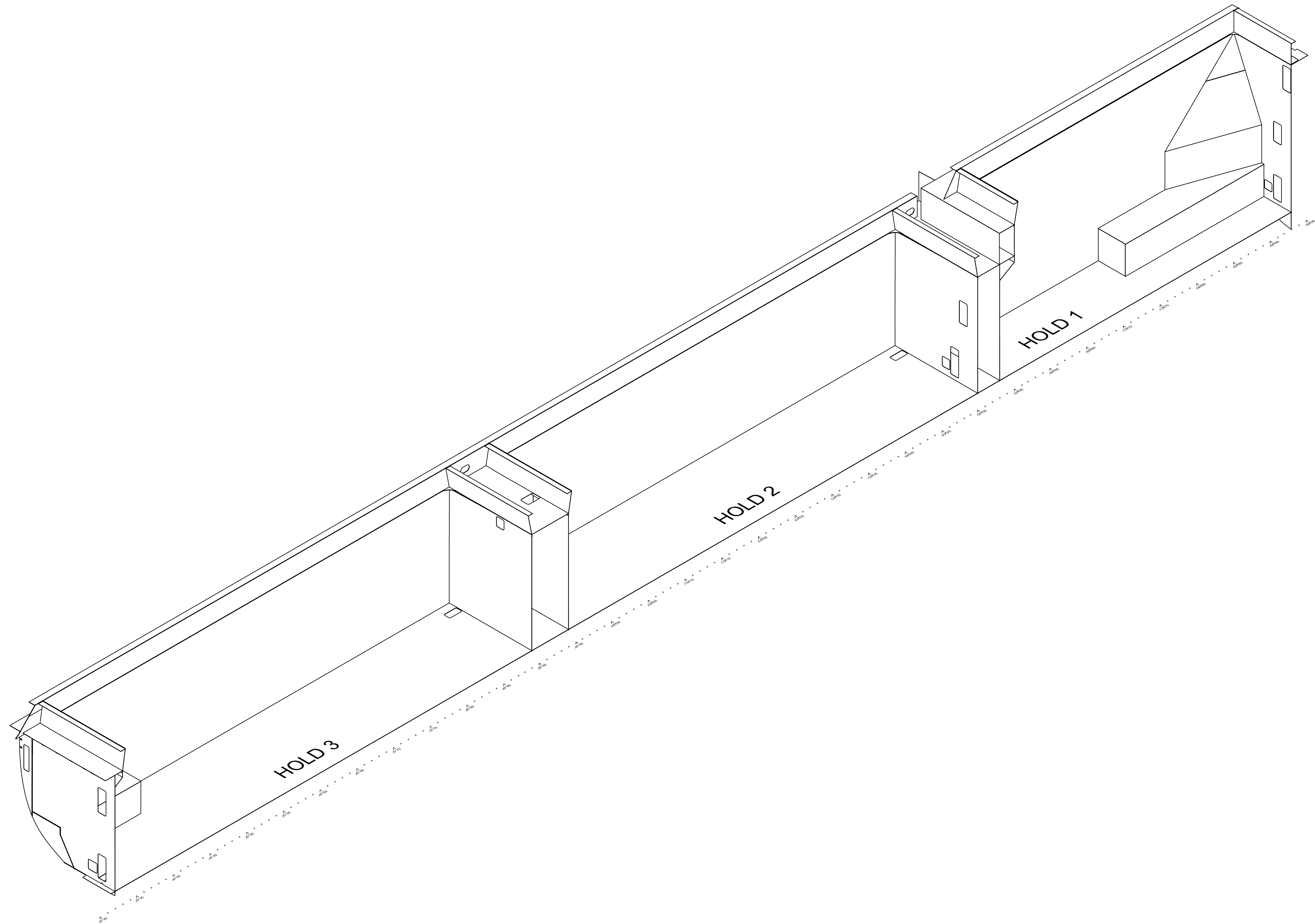
HOLD 3

| | | |
|---|---------------------|-------------|
|  | 3D | |
| | POCKET PLAN | |
| | REV | SCALE |
| | DRW'N GCS10-W-10-3D | SHEET:06/08 |



3D
POCKET PLAN

| | |
|---------------------|-------------|
| REV | SCALE |
| DRW'N GCS10-W-10-3D | SHEET:07/08 |



3D
POCKET PLAN

| | |
|---------------------|-------------|
| REV | SCALE |
| DRW'N GCS10-W-10-3D | SHEET:08/08 |