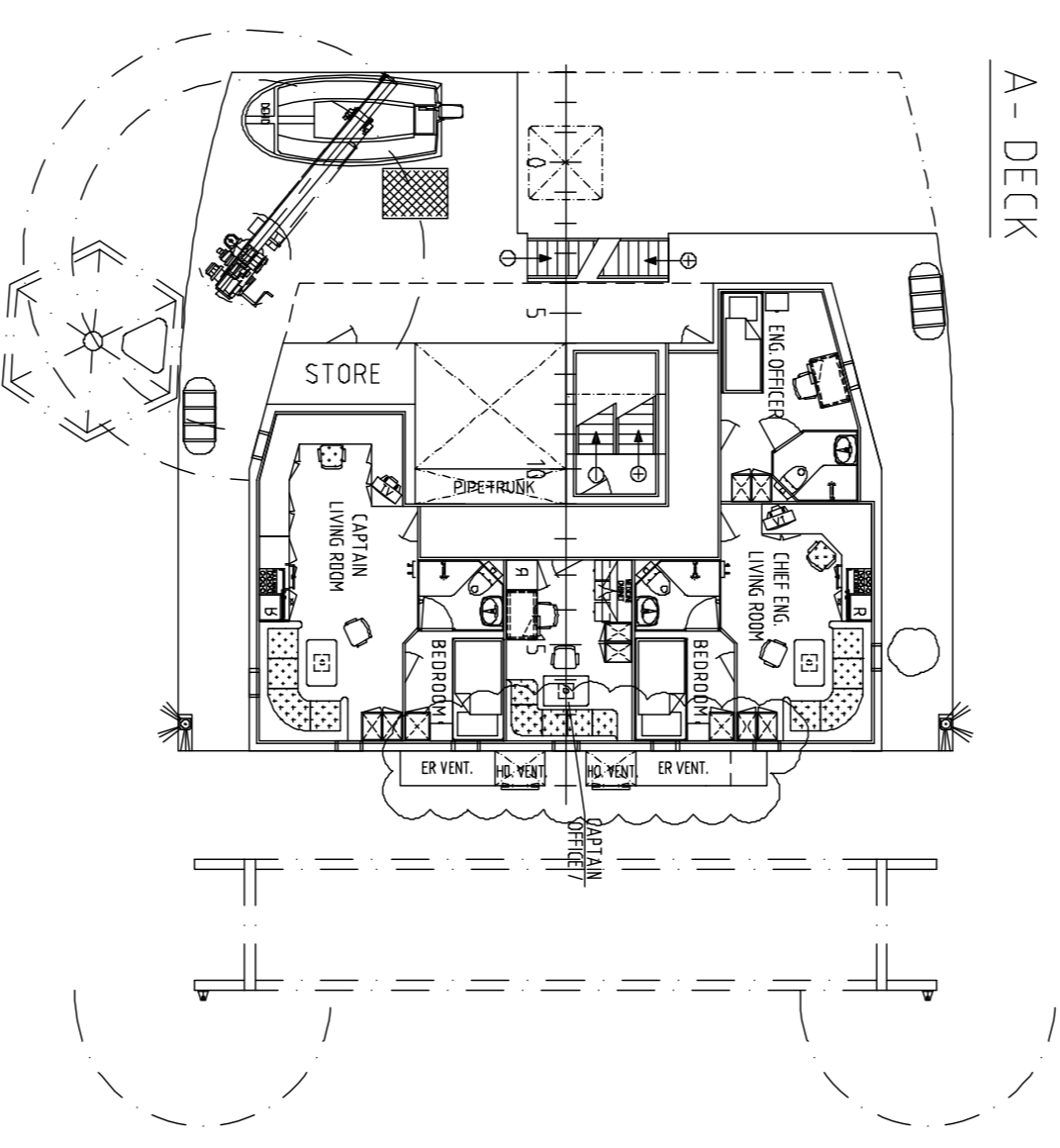
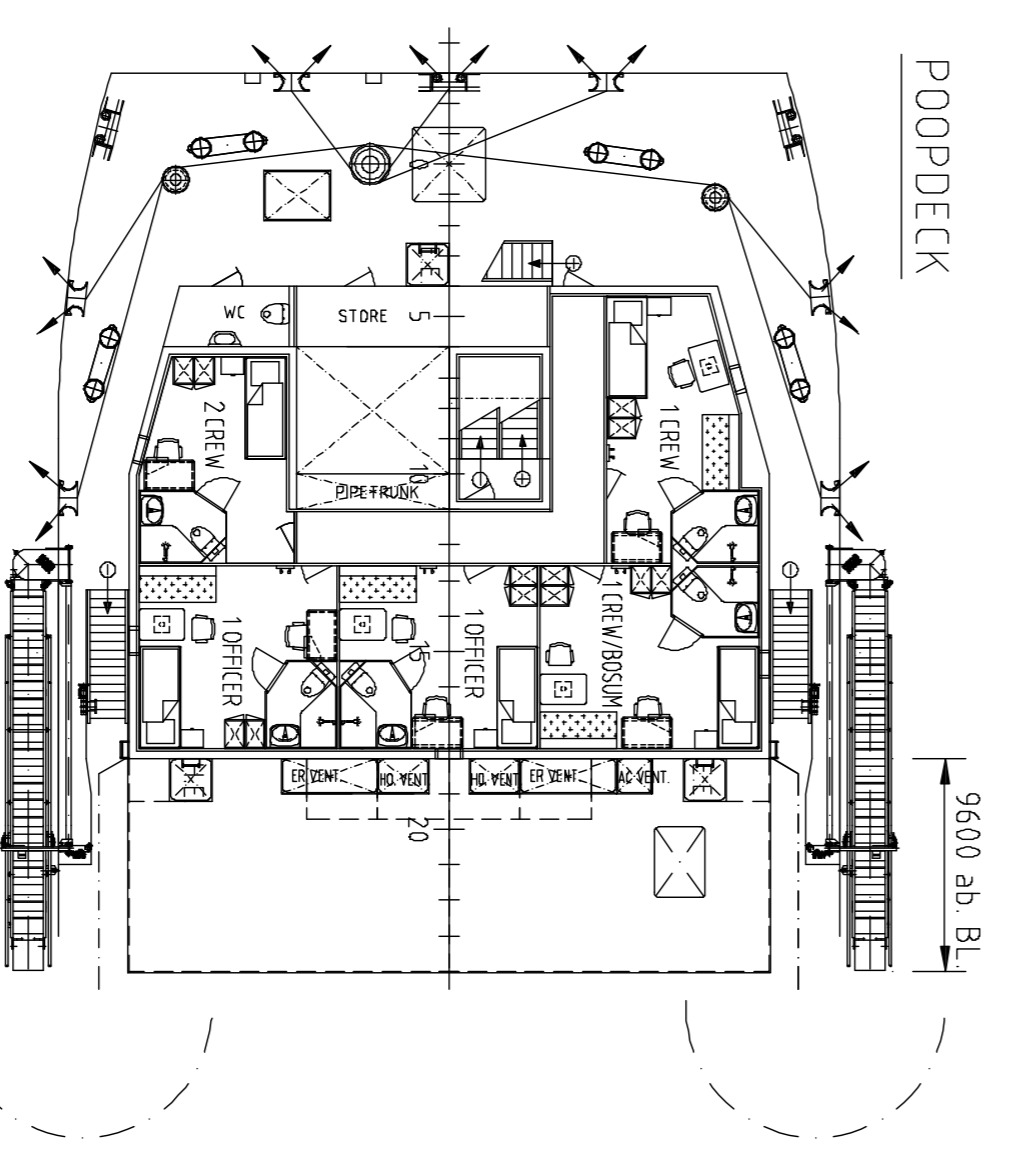


BRIDGE DECK

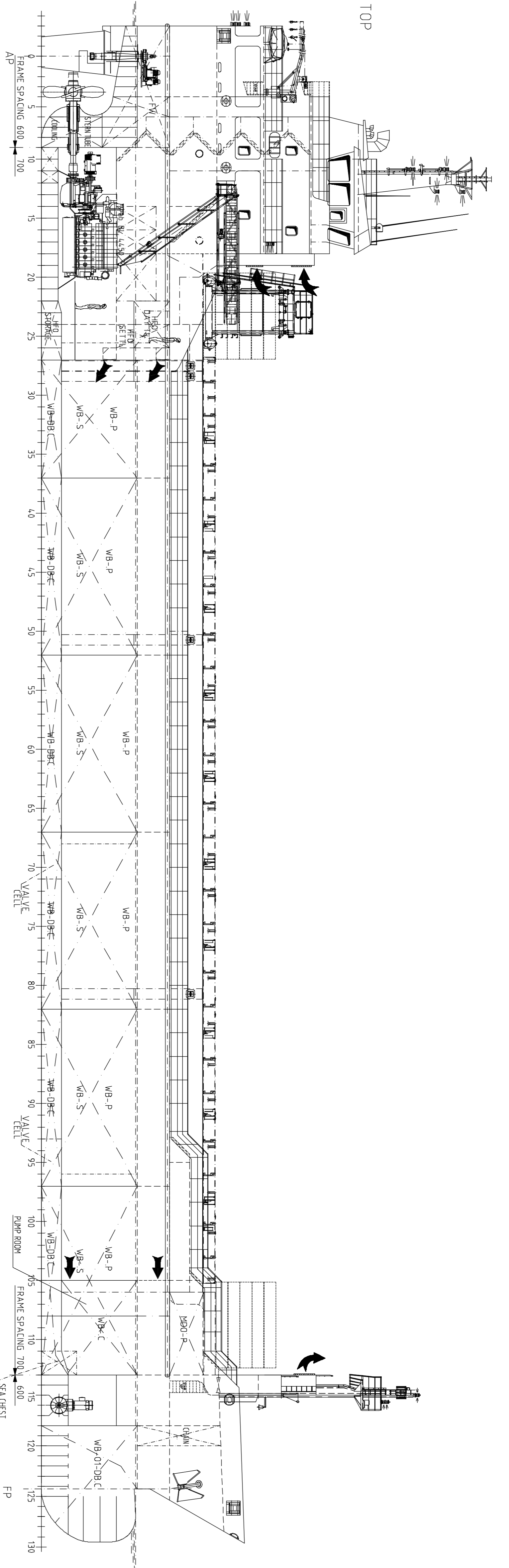
- WHEELHOUSE TOP
18800 ab BL
- BRIDGE DECK
16000 ab BL
- A- DECK
13200 ab BL
- POOPDECK
10400 ab BL
- MAIN DECK
7600 ab BL
- 2nd DECK
5700 ab BL



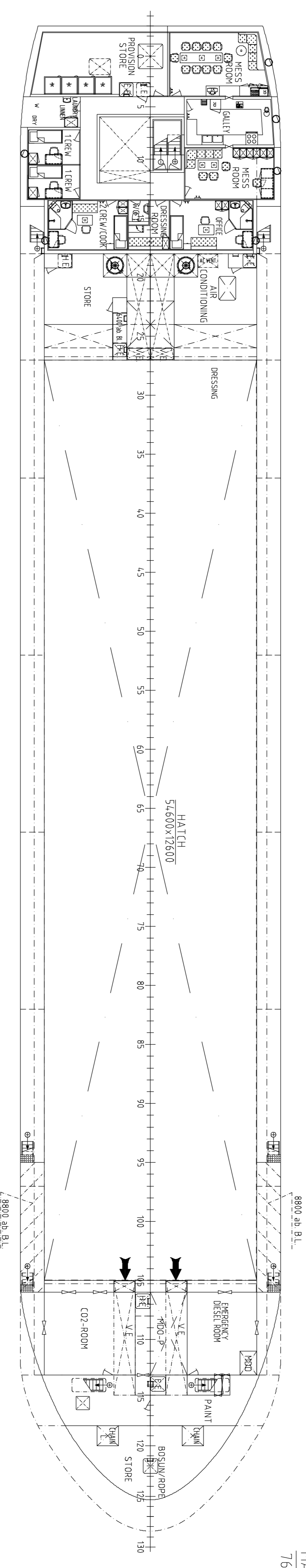
A- DECK



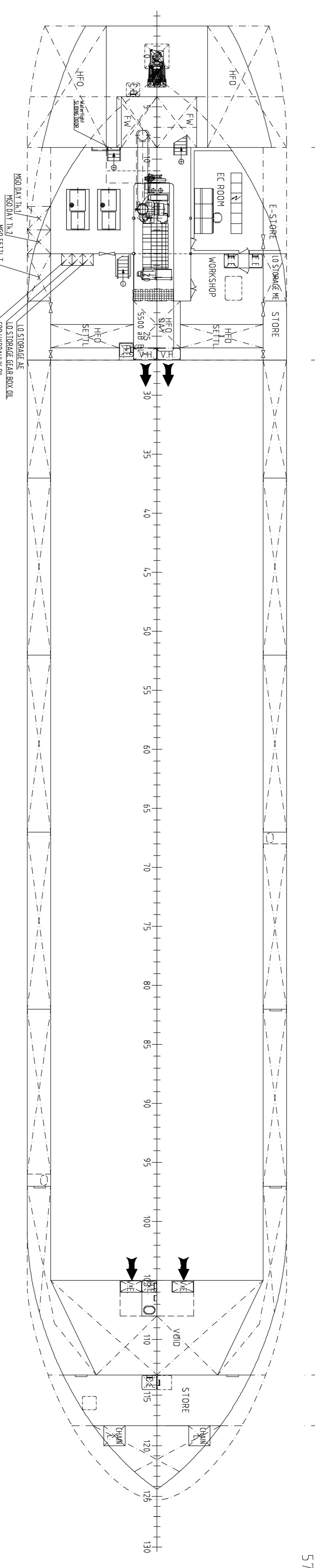
POOPDECK



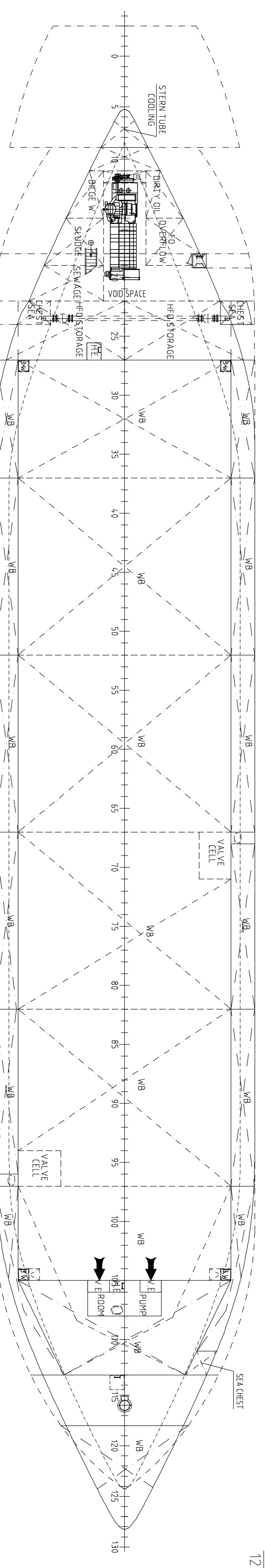
MAIN DECK
7600 ab BL



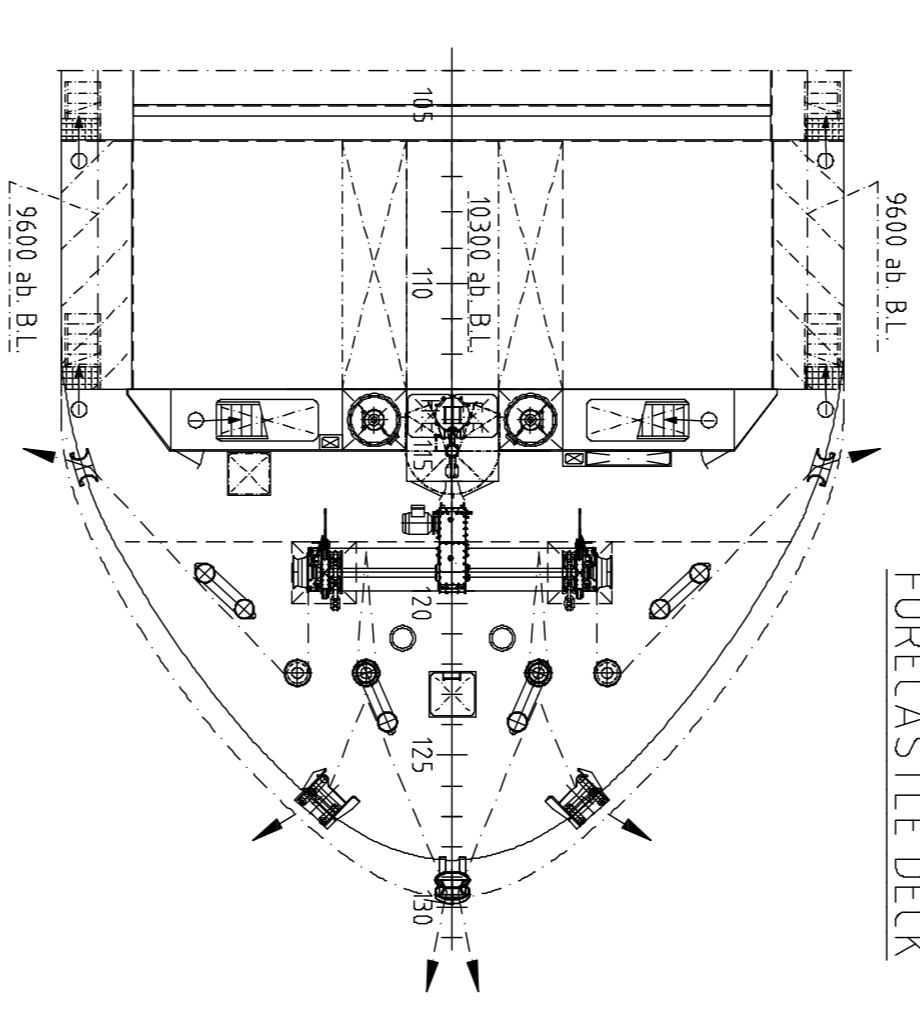
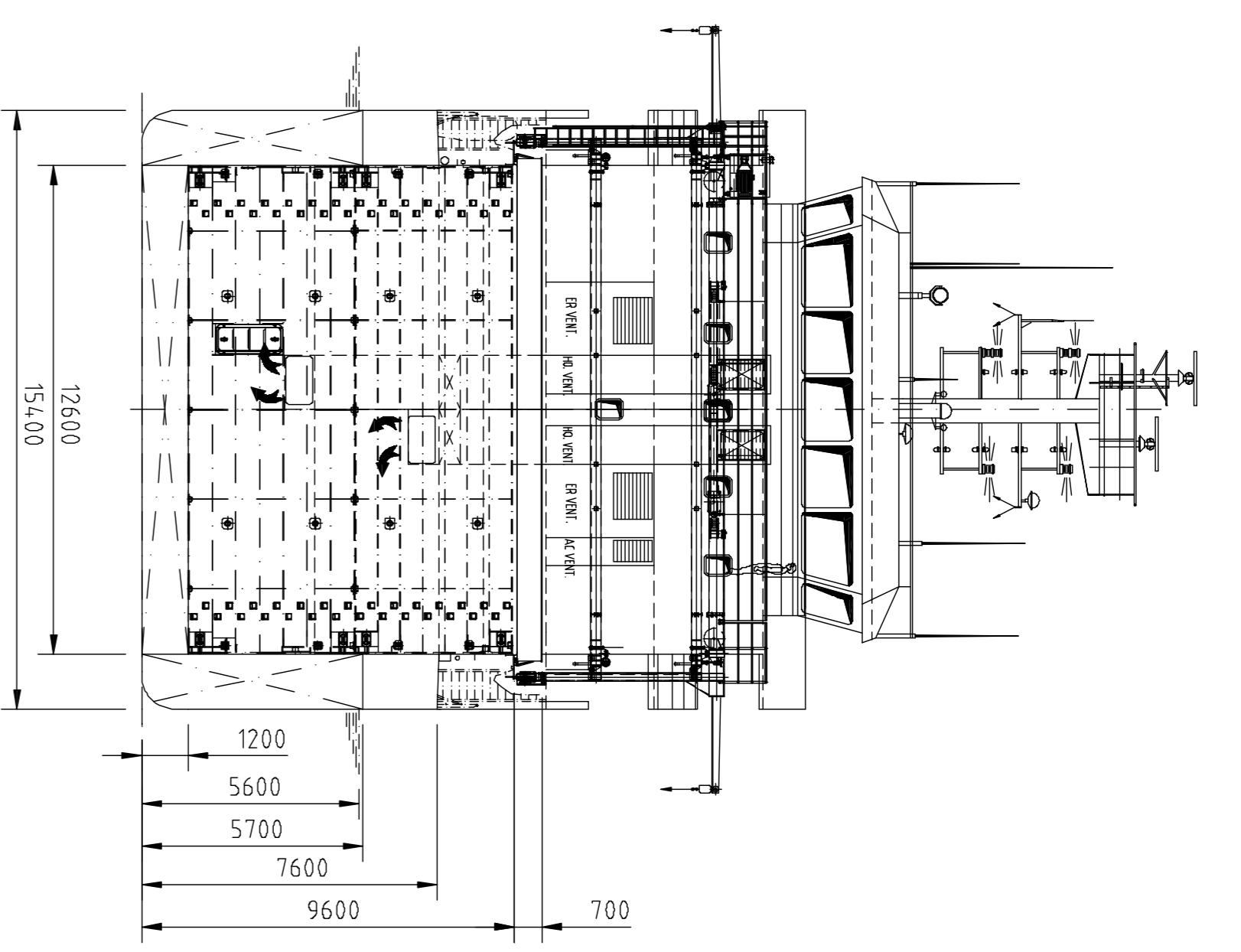
2nd DECK
5700 ab BL



DOUBLE BOTTOM
1200 ab BL



FORECASTLE DECK



"Equipped for Carriage of Containers"

"Strengthened for Heavy Cargoes"

"Solas II-2 - Req. 19"

MAIN DIMENSIONS
 LENGTH OVER ALL 89.97 m
 LENGTH BETWEEN PERPENDICULARS 84.95 m
 BREADTH MOULDED 15.40 m
 DEPTH TO MAINDECK 7.60 m
 DESIGN DRAUGHT 5.60 m
 SCANTLING DRAUGHT 6.46 m
 DEADWEIGHT AT T 5650 TDW
 HOLD CAPACITY 204,000 CBF
 SPEED (AT D=5.60 m) 12.4 KN
 ENGINE OUTPUT 1940 KW

DATE	DRAWN	APPROVED	DATE	APPROVED
01.07.2017	[Signature]	[Signature]	01.17.00	[Signature]

KUZZEY NAVAL ARCHITECTURE
 Kuzzeysel Mühendislik ve İnşaat Mühendislikleri Ltd. Şti.
 Nispetiye Mahallesi Cankaya Sokakları Kat: 5-7 Beşiktaş/İstanbul
 Tel: +90 (0212) 365 80 87
 E-mail: info@kuzzeysel.com.tr / kuzzeysel@kuzzeysel.com.tr

SCALE	OWNER	DESIGNER	DATE	SCALE	DATE
1:150	SEA RABBIT CHARTERING	KUZZEY NAVAL ARCHITECTURE	01.07.2017	1:150	01.17.00

GENERAL ARRANGEMENT PLAN

M/V ERLE

NOTICE: This drawing and the information it contains are the property of KUZZEY NAVAL ARCHITECTURE & MARINE ENGINEERING LTD. and may not be reproduced or used in part or in whole for any purpose without the written permission of this company.