

WHEELHOUSE TOP
18800 ab BL

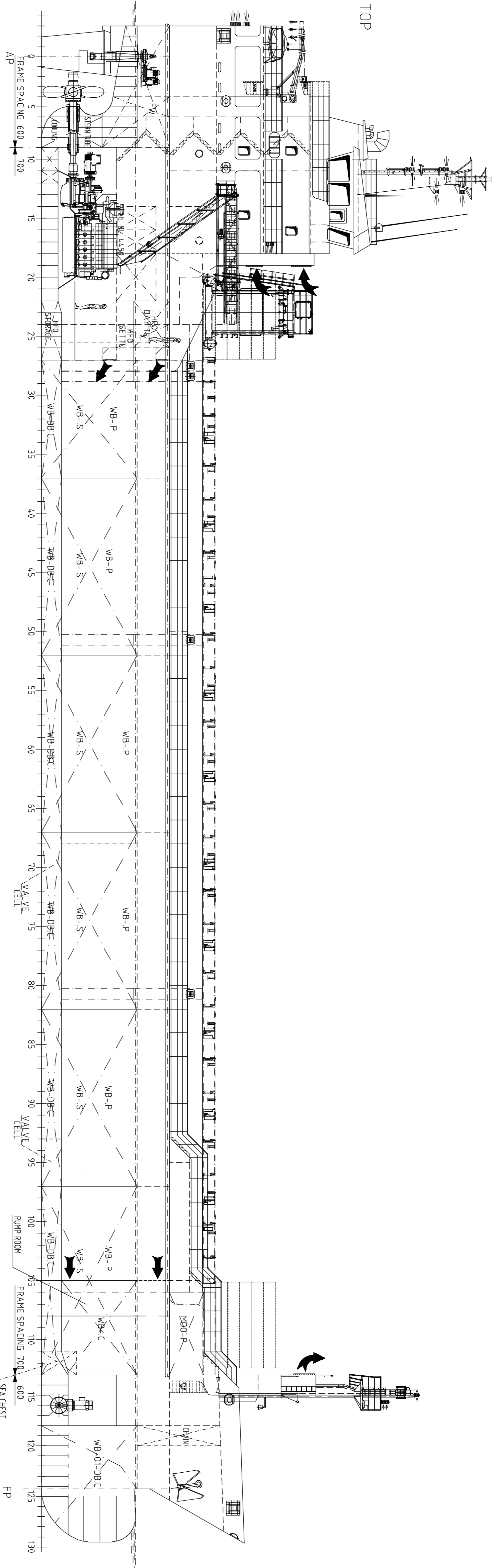
BRIDGE DECK
16000 ab BL

A- DECK
13200 ab BL

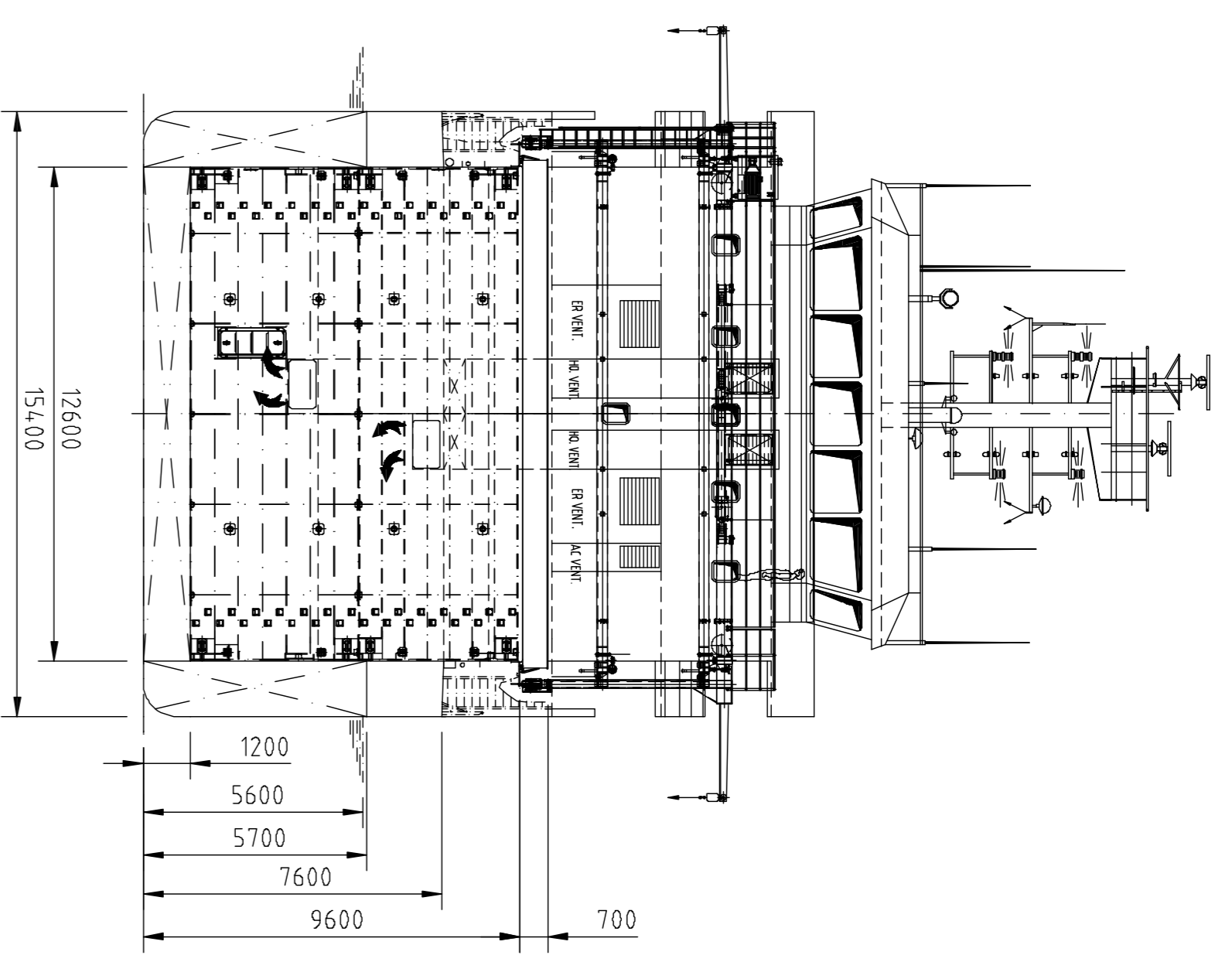
POOPDECK
10400 ab BL

MAIN DECK
7600 ab BL

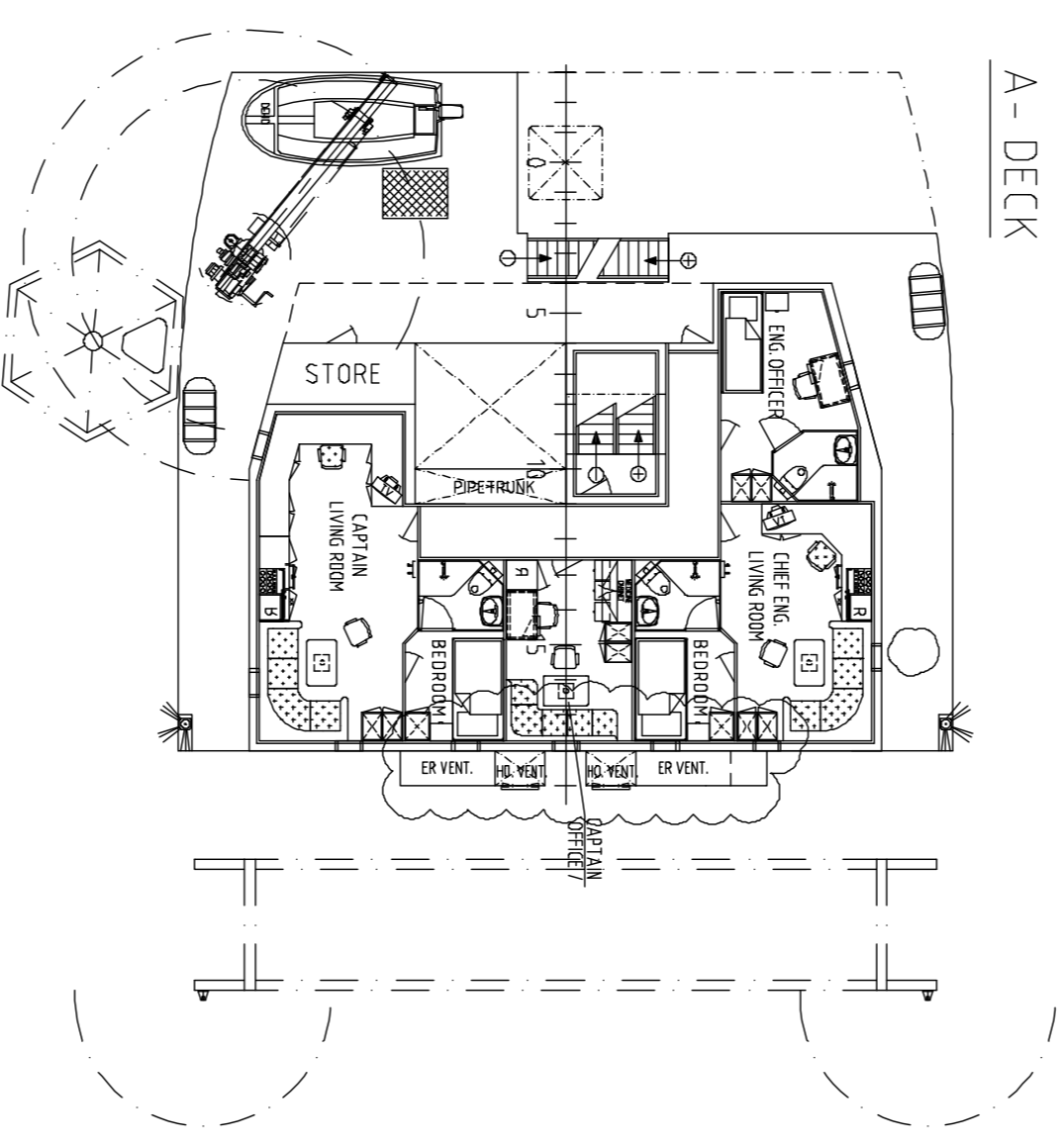
2ND DECK
5700 ab BL



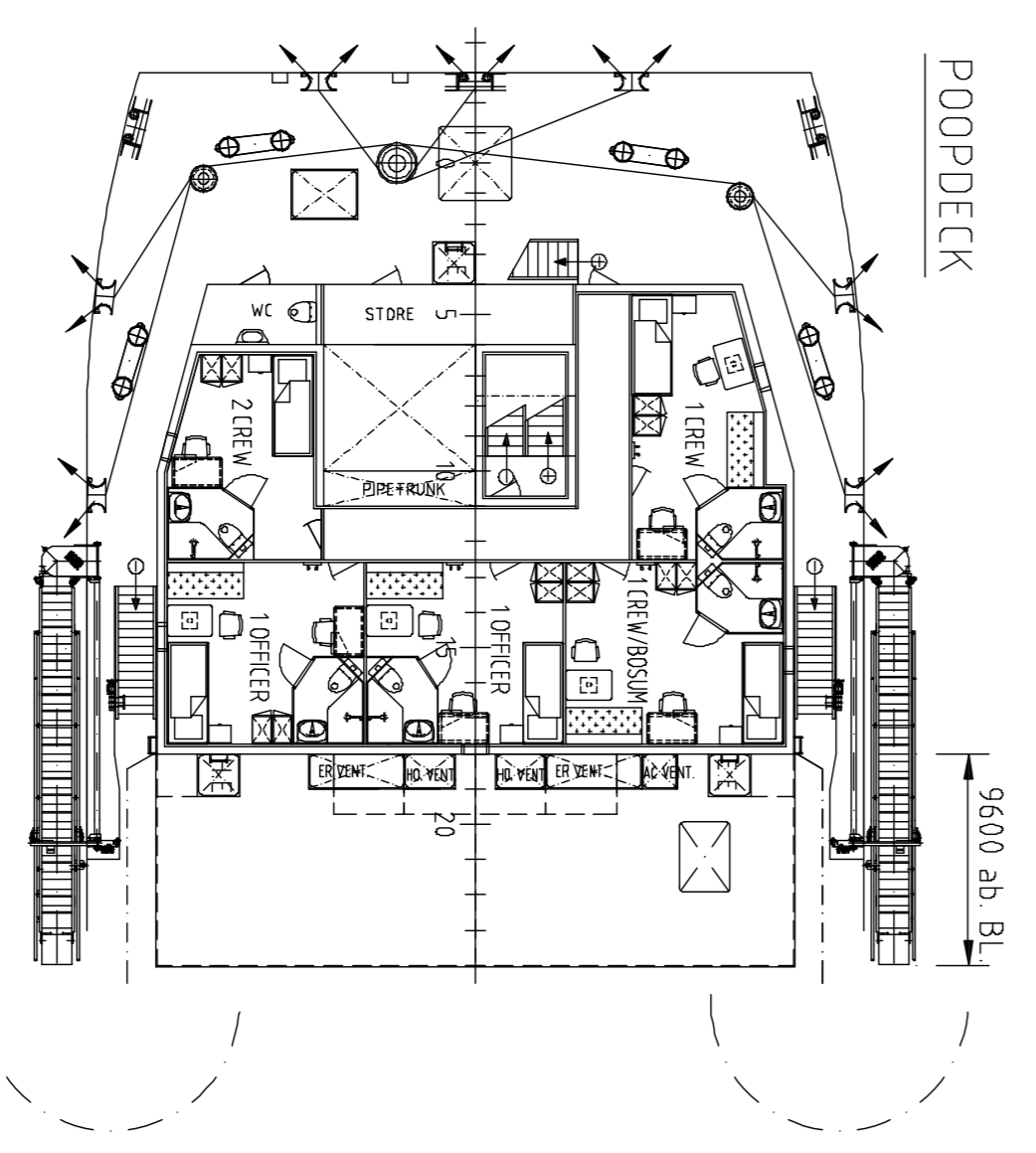
MAIN DECK
7600 ab BL



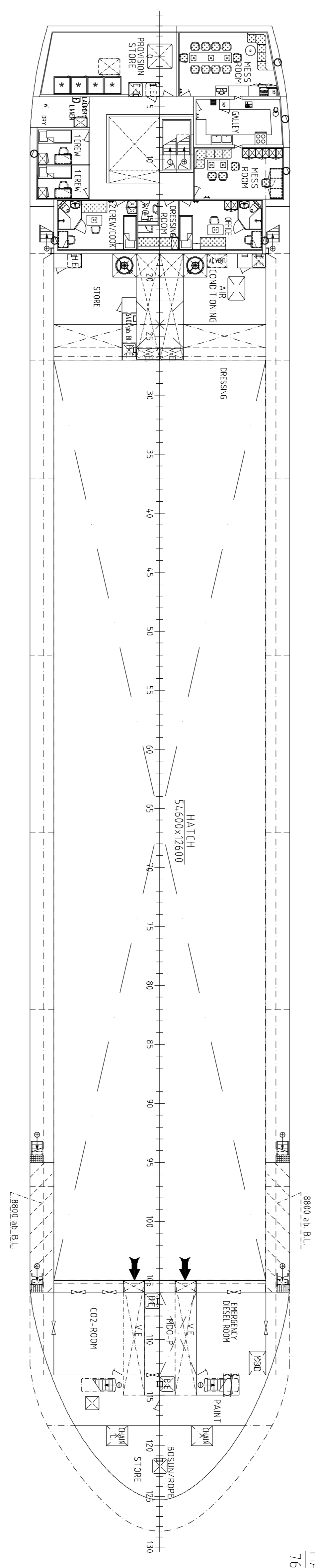
FORECASTLE DECK
7600 ab BL



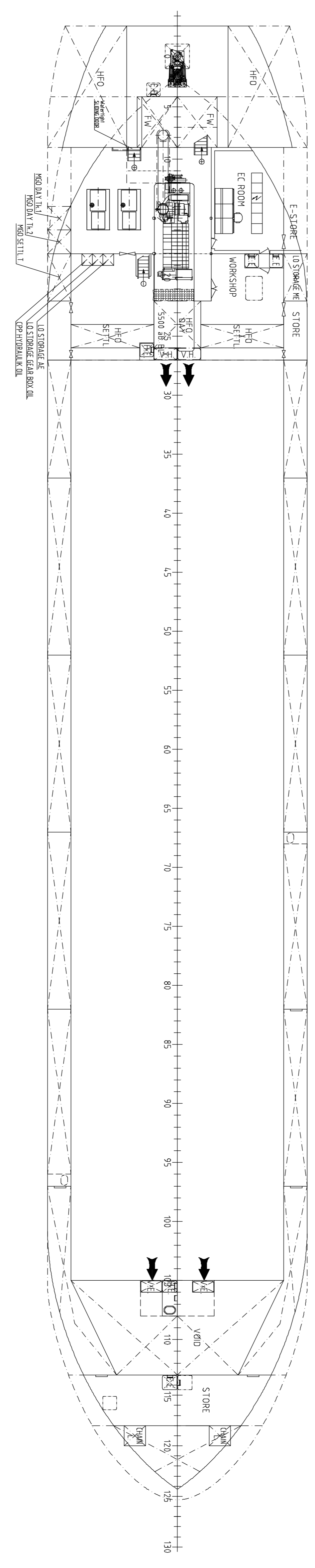
A- DECK
13200 ab BL



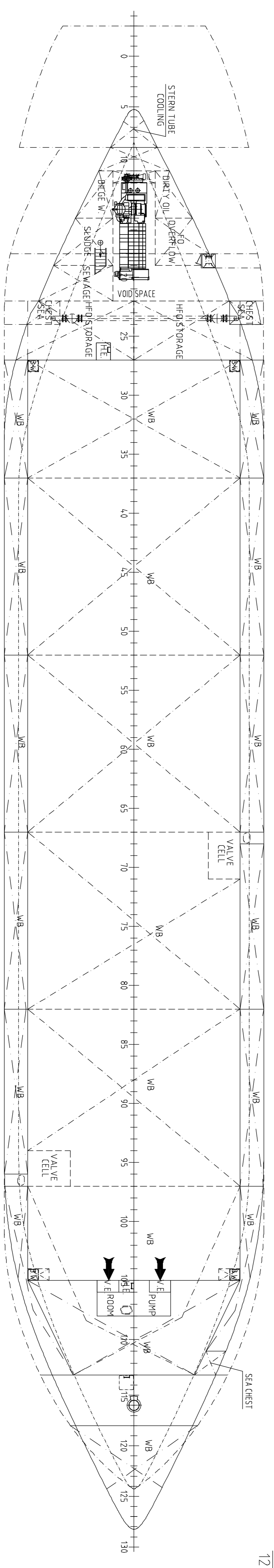
POOPDECK
10400 ab BL



2ND DECK
5700 ab BL



DOUBLE BOTTOM
1200 ab BL



“Equipped for Carriage of Containers”
“Strengthened for Heavy Cargoes”
“Solus II-2 – Req. 19”

MAIN DIMENSIONS

LENGTH OVER ALL 89.97 m

LENGTH BETWEEN PERPENDICULARS 84.95 m

BREADTH BETWEEN PERPENDICULARS 15.40 m

DEPTH TO MAINDECK 7.60 m

DEPTH TO MAINDECK 7.60 m

DESIGN DRAUGHT 5.60 m

SCANTLING DRAUGHT 6.46 m

DEADWEIGHT AT T=6.46 5650 TDW

HOLD CAPACITY 204,000 CBF

SPEED (AT D=5.60 m) 12.4 KN

ENGINE OUTPUT 1940 KW

DATE	APPROVED	DATE	APPROVED	DATE	APPROVED
01.07.2017	[Signature]	01.07.2017	[Signature]	01.07.2017	[Signature]
01.1.2017	[Signature]	01.1.2017	[Signature]	01.1.2017	[Signature]

OWNER: BUREAU VERITAS & MARITIME CONSULTANTS

DESIGNER: KUZEY NAVAL ARCHITECTURE & MARINE ENGINEERING

DATE: 01.07.2017

SCALE: 1:150

PROJECT NO: 1800-011

REVISIONS:

NO	REMARKS	DATE
1	ISSUED FOR CONSTRUCTION	01.07.2017